



**GLAM<sup>®</sup> Bracket**  
*Absolutly inconspicuous*



[www.forestadent.com](http://www.forestadent.com)

 **FORESTADENT<sup>®</sup>**  
GERMAN PRECISION IN ORTHODONTICS



# GLAM<sup>®</sup>-Bracket

*Simply makes your patients look good*

*The conventionally ligating ceramic brackets are completely translucent and therefore fulfil the aesthetic demands of the most discerning patients. Rounded slot edges reduce friction and ensure shorter treatment times. A signifi-*

*cant advantage for the orthodontist is that these new ceramic brackets are especially easy to debond without any risk of splintering. GLAM<sup>®</sup> brackets make for a good look on your patient and simplify your work.*

## *Pure aesthetics*

*Not only adults but more and more younger patients are now calling for unobtrusive treatment using aesthetic materials. The GLAM<sup>®</sup> bracket from FORESTADENT enables you to fulfil this wish without fear of com-*



promise. Due to its polycrystalline ceramic structure this one piece bracket is totally inconspicuous: Whereas the smooth surfaces of many ceramic brackets cause harsh reflections which attract unwanted attention, the gentle opalescence of the GLAM®'s surface is completely matt and beautifully discreet.

A further winning feature of the GLAM® brackets is their outstanding translucence. Since they possess no dominant colour of their own, GLAM® brackets blend in with the natural shade of the patient's teeth.

But GLAM® offers even more. The rounded slot edges not only make for reduced friction, they also protect the surfaces of tooth-coloured archwires. When used in conjunction with BioCosmetic® archwires, for example, the GLAM® bracket instantly blends in to form an aesthetic solution – to the delight of even the most discerning patients.

#### **Uncompromising functionality**

The GLAM® bracket consists of a single piece of distortion-proof ceramic. This ensures that clinical forces are efficiently and accurately transferred from the slot to the base.

The modern manufacturing method

of GLAM® achieves better and rounder slot inlets.

#### **Ceramic doesn't have to splinter**

Most patients appreciate the aesthetic advantages of ceramic brackets. Very few, however, are aware of the problems encountered during debonding. For many orthodontists, the thought that ceramic may splinter or fracture is a major cause for concern. In order to actively combat this risk already during the development of the GLAM® bracket, FORESTADENT was able to draw on the company's extensive experience in developing three generations of the Quicklear® bracket. Inspired by the easy handling and above-all trouble-free debonding of this bracket, GLAM® was specifically designed to be removed in one piece by means of the Pauls debonding tool, without splintering or fracturing.

#### **In the best of company**

From an aesthetic point of view, GLAM® brackets are in the very best of company. Together with the aesthetic BioCosmetic® archwires, they form a perfect combination. The durable tooth-coloured coating of BioCosmetic® archwires retains its whiteness over time and therefore remains inconspicuous during the entire course of treat-

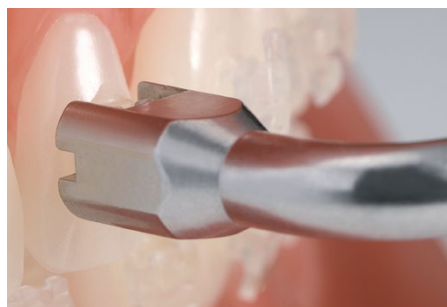
ment. When used in conjunction with transparent elastic ligatures or tooth-coloured steel ligatures, the aesthetic effect is nothing short of perfection.

With patients suffering from an extreme overbite, the upper incisors often collide with ceramic brackets bonded to the lower arch. In order to prevent this from happening, many orthodontists resort to the combined use of vestibular ceramic (maxillary) and lingual (mandibular) brackets.

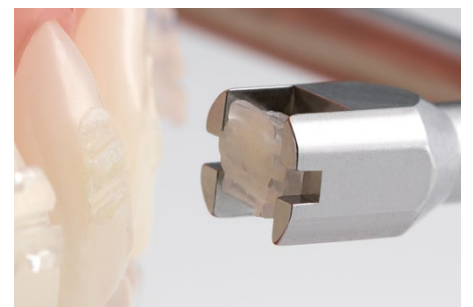
For clinical cases such as these, the 2D® lingual system from FORESTADENT presents an excellent alternative. The 2D® lingual brackets are extremely flat, which ensures the most effective treatment and highest possible degree of patient comfort.



**New:** Colour markings for easier bracket identification. Marking of the slot for easier bracket placement



GLAM® is our latest ceramic twin bracket. Due to its optimal translucency it is very aesthetic. The rounded slot edges perfectly enable the use of our BioCosmetic archwires. With the well-known Pauls Tool GLAM® brackets can be removed without any problems.



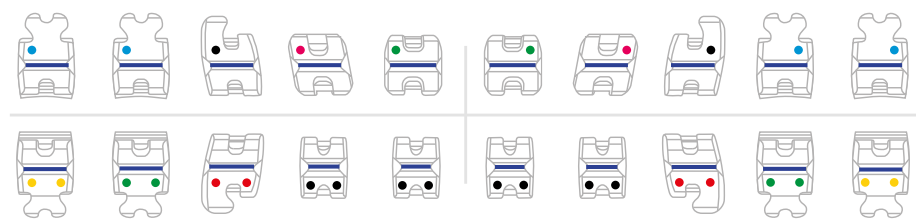
GLAM® Brackets

Roth System



CE 0297

Colour-marks



GLAM® Brackets Roth System

Maxillary					Slot .018"		Slot .022"	
Tooth	Torque	Angulation	In/Out	Rotation	Order-no.		Order-no.	
					Right	Left	Right	Left
1 Centrals	+12°	+5°	1,0	–	G764-0103	G763-0103	G764-0101	G763-0101
2 Laterals	+8°	+9°	1,5	–	G764-0203	G763-0203	G764-0201	G763-0201
3	Cuspids	-2°	+11°	1,0 4° mesial	G764-0303	G763-0303	G764-0301	G763-0301
	Cuspids + hook	-2°	+11°	1,0 4° mesial	G764-0313	G763-0313	G764-0311	G763-0311
4	Bicuspids	-7°	0°	1,0 –	G764-0503	G763-0503	G764-0501	G763-0501
	Bicuspids + hook	-7°	0°	1,0 –	G764-0513	G763-0513	G764-0511	G763-0511
5	Bicuspids	-7°	0°	1,0 –	G764-0503	G763-0503	G764-0501	G763-0501
	Bicuspids + hook	-7°	0°	1,0 –	G764-0513	G763-0513	G764-0511	G763-0511

Mandibular					Slot .018"		Slot .022"	
Tooth	Torque	Angulation	In/Out	Rotation	Order-no.		Order-no.	
					Right	Left	Right	Left
1 Centrals	0°	0°	1,5	–	G763-1203	G763-1203	G763-1201	G763-1201
2 Laterals	0°	0°	1,5	–	G763-1203	G763-1203	G763-1201	G763-1201
3	Cuspids	-11°	+7°	1,0 2° mesial	G764-1403	G763-1403	G764-1401	G763-1401
	Cuspids + hook	-11°	+7°	1,0 2° mesial	G764-1413	G763-1413	G764-1411	G763-1411
4	Bicuspids	-17°	0°	0,7 –	G763-1503	G763-1503	G763-1501	G763-1501
	Bicuspids + hook	-17°	0°	0,7 –	G763-1513	G763-1513	G763-1511	G763-1511
5	Bicuspids	-22°	0°	0,7 –	G763-1603	G763-1603	G763-1601	G763-1601
	Bicuspids + hook	-22°	0°	0,7 –	G763-1613	G763-1613	G763-1611	G763-1611

Cases

Variation	Slot .018"		Slot .022"	
Cases	1	3	1	3
	G706-0700	G706-0701	G706-0705	G706-0706
3	G706-0710	G706-0711	G706-0715	G706-0716
3-5	G706-0720	G706-0721	G706-0725	G706-0726

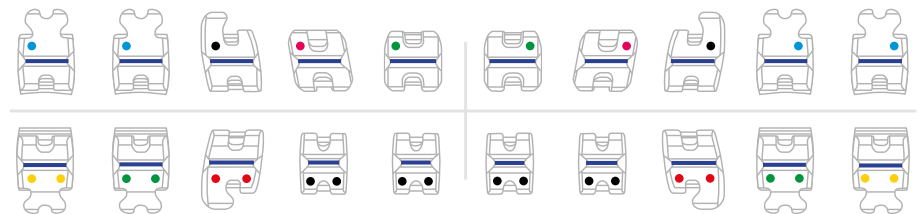
GLAM® Brackets

McLaughlin Bennett 5.0 System



CE 0297

Colour-marks



GLAM®-McLaughlin Bennett 5.0 System

Maxillary					Slot .018"		Slot .022"	
Tooth	Torque	Angulation	In/Out	Rotation	Order-no.		Order-no.	
					Right	Left	Right	Left
1 Centrals	+17°	+4°	1,25	–	G762T0103	G761T0103	G762T0101	G761T0101
2 Laterals	+10°	+8°	1,5	–	G762T0203	G761T0203	G762T0201	G761T0201
3 Cuspids	-7°	+8°	1,0	–	G762T0303	G761T0303	G762T0301	G761T0301
	Cuspids + hook	-7°	+8°	–	G762T0313	G761T0313	G762T0311	G761T0311
3 Cuspids	0°	+8°	1,0	–	G762T0323	G761T0323	G762T0321	G761T0321
	Cuspids + hook	0°	+8°	–	G762T0333	G761T0333	G762T0331	G761T0331
4 Bicuspids	-7°	0°	1,0	–	G762T0503	G761T0503	G762T0501	G761T0501
	Bicuspids + hook	-7°	0°	–	G762T0513	G761T0513	G762T0511	G761T0511
5 Bicuspids	-7°	0°	1,0	–	G762T0503	G761T0503	G762T0501	G761T0501
	Bicuspids + hook	-7°	0°	–	G762T0513	G761T0513	G762T0511	G761T0511

Mandibular					Slot .018"		Slot .022"	
Tooth	Torque	Angulation	In/Out	Rotation	Order-no.		Order-no.	
					Right	Left	Right	Left
1 Centrals	-6°	0°	1,5	–	G761T1203	G761T1203	G761T1201	G761T1201
2 Laterals	-6°	0°	1,5	–	G761T1203	G761T1203	G761T1201	G761T1201
3 Cuspids	-6°	+3°	1,0	–	G762T1403	G761T1403	G762T1401	G761T1401
	Cuspids + hook	-6°	+3°	–	G762T1413	G761T1413	G762T1411	G761T1411
3 Cuspids	0°	+3°	1,0	–	G762T1423	G761T1423	G762T1421	G761T1421
	Cuspids + hook	0°	+3°	–	G762T1433	G761T1433	G762T1431	G761T1431
4 Bicuspids	-12°	0°	0,7	–	G761T1503	G761T1503	G761T1501	G761T1501
	Bicuspids + hook	-12°	0°	–	G761T1513	G761T1513	G761T1511	G761T1511
5 Bicuspids	-17°	0°	0,7	–	G761T1603	G761T1603	G761T1601	G761T1601
	Bicuspids + hook	-17°	0°	–	G761T1613	G761T1613	G761T1611	G761T1611

Cases

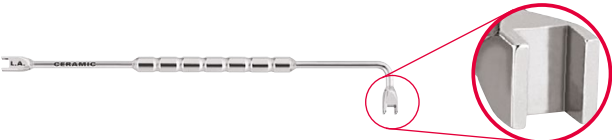

Upper cuspids -7° torque, lower cuspids -6° torque

Variation	Slot .018"		Slot .022"	
Cases	1	3	1	3
	G706T0759	G706T0760	G706T0735	G706T0736
3	G706T0762	G706T0763	G706T0740	G706T0741
3-5	G706T0765	G706T0766	G706T0745	G706T0746

Cuspids 0° Torque

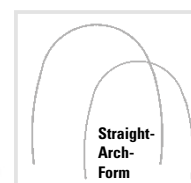
Slot .018"		Slot .022"	
1	3	1	3
G706T0773	G706T0774	G706T0767	G706T0768
G706T0775	G706T0776	G706T0769	G706T0770
G706T0777	G706T0778	G706T0771	G706T0772


## Auxillaries

C501-0815 CE		1	„Pauls-Tool“ for debonding of GLAM® and QuicKlear® brackets – double sided
G950-1000		1	Typodont GLAM®-Brackets

## BioCosmetic® - Straight-Arch-Form

Individually packed



Description		Order No. Maxillary	Order No. Mandibular	profile	force	ø inch	ø mm	contents
<b>BioCosmetic</b> Superelastic 		217-0845	217-0945	●	25 g	.017"	0,43	10
		217-0850	217-0950	●	35 g	.019"	0,48	10
		217-1440	217-1540	■	55 g	.016" x .016"	0,40 x 0,40	10
		217-2040	217-2140	■	90 g	.016" x .022"	0,41 x 0,56	10
		217-2046	217-2146	■	135 g	.018" x .025"	0,46 x 0,64	10