



# Uniz NBEE

Currently the fastest  
3D printer in the world

[digital.forestadent.com](http://digital.forestadent.com)

**FORESTADENT**<sup>®</sup>  
GERMAN PRECISION IN ORTHODONTICS



# Uniz NBEE

Its printing speed is currently unbeatable – it prints 6 aligner models in approx. 5 minutes\*. Its patented liquid cooling system ensures a stable printing process with very high accuracy.

The patented low-force stereo peel technology of the resin tank in combination with a collimated light source with high output (16 mW/cm<sup>2</sup>, 95 % uniformity) and active monitoring of the reaction temperature create ideal conditions for fast, high-quality printing results.

\* Depending on the model height

# Uniz NBEE

## Technical data

PRINTING	
Printing process	LCD Stereo Lithography
Build space	192 x 120 x 180 mm   7.5 x 4.7 x 7.1"
XY resolution	49.8 µm
Maximum accuracy*	± 10 µm
Layer thickness (Z-resolution)	10 – 200 µm (25, 50, 100 recommended)
Separation technology	Stereo-Polymer-Multi-Layer-Film-Peel
Support	Uniz smart support technology
Print speed**	6 aligner models in approx. 5 minutes
HARDWARE	
Dimensions / Weight	380 x 380 x 1230 mm [LxBxH] – 15 x 15 x 49" – 60 kg   132 lb
Operating temperature	18 – 28 °C   64 – 82 °F
Input voltage	110 V, 6A, 60 Hz   220 V, 3A, 50 Hz
Optical system	Collimated light source (4th generation)
Casing	Cast aluminum and sheet steel
Connectivity	USB Flash drive, Wi-Fi, Ethernet
Operation interface	7" Touchscreen
SOFTWARE	
System requirements	Windows 10 and higher (64-bit version only), Mac OS X 11.4 and higher (64-bit version only), 16 GB RAM, OpenGL 2.1, Discrete Graphics
Features of the sliceware	Advanced Model Repair Ultra Large File Support (1 GB+)
Compatible formats	STL, OBJ, AMF, 3MF

\* Data was collected with aligner models defined for test purposes. Test results with other models may differ.

\*\* Results with special speed test models (other models lead to different results).

# Uniz SLASH 2 PLUS

# Uniz SLASH 2 PLUS

## Technical data



SLASH 2 PLUS is an advanced model of the desktop printer from UNIZ and also impresses with its speed. It can print 6 aligner models in approx. 18 minutes\*.

Like the NBEE, the SLASH 2 PLUS also features the patented liquid cooling system, which ensures a stable and reliable printing process. Thanks to an even more powerful LED light source (12000 $\mu$ W/cm<sup>2</sup>) compared to the previous model, almost all dental resins available on the market, e.g. for direct print aligners, dental models, implant templates and also trays for indirect bonding and splints, can now be processed on the SLASH 2 PLUS.

\* Depending on the model height

PRINTING	
Printing process	LCD Stereo Lithography
Build space	192 x 120 x 200 mm   7.5 x 4.7 x 7.9"
XY resolution	49.8 $\mu$ m
Maximum accuracy*	$\pm$ 10 $\mu$ m
Layer thickness (Z-resolution)	10 – 200 $\mu$ m (25, 50, 100 recommended)
Separation technology	Polymer-Film-Natural-Peel
Support	Uniz smart support technology
Print speed**	6 aligner models in approx 18 minutes
HARDWARE	
Dimensions / Weight	350 x 400 x 530 mm [LxBxH] – 14 x 16 x 21" – 15 kg   33 lb
Operating temperature	18 – 28 °C   64 – 82 °F
Input voltage	100 – 240 V, 6A, 50/60 Hz
Optical system	Patented LED array light engine
Casing	Cast aluminum and plastic molded parts
Connectivity	USB Flash drive, Wi-Fi, Ethernet
Operation interface	4.3" Touchscreen
SOFTWARE	
System requirements	Windows 10 and higher (64-bit version only), Mac OS X 11.4 and higher (64-bit version only), 16 GB RAM, OpenGL 2.1, Discrete Graphics
Features of the sliceware	Advanced Model Repair Ultra Large File Support (1 GB+)
Compatible formats	STL, OBJ, AMF, 3MF, ZPRJ

\* Data was collected with aligner models defined for test purposes. Test results with other models may differ.

\*\* Results with special speed test models (other models lead to different results).

# Most important features of Uniz NBEE



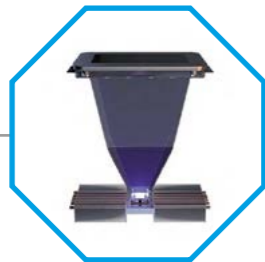
## Highly efficient liquid cooling

Keeps the system temperature  
below 40 °C



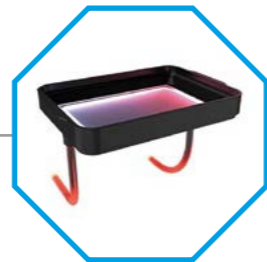
## Micro-stereo composite

Patented low-power  
stereo peel technology



## Collimated high-power light source

16 mW/cm<sup>2</sup>,  
95% uniformity



## Resin temperature control system

Maintaining the optimum  
reaction temperature

# High-precision models Printed with the Uniz NBEE



99,91 % of the data points  
in the range of 100 µm of the original data

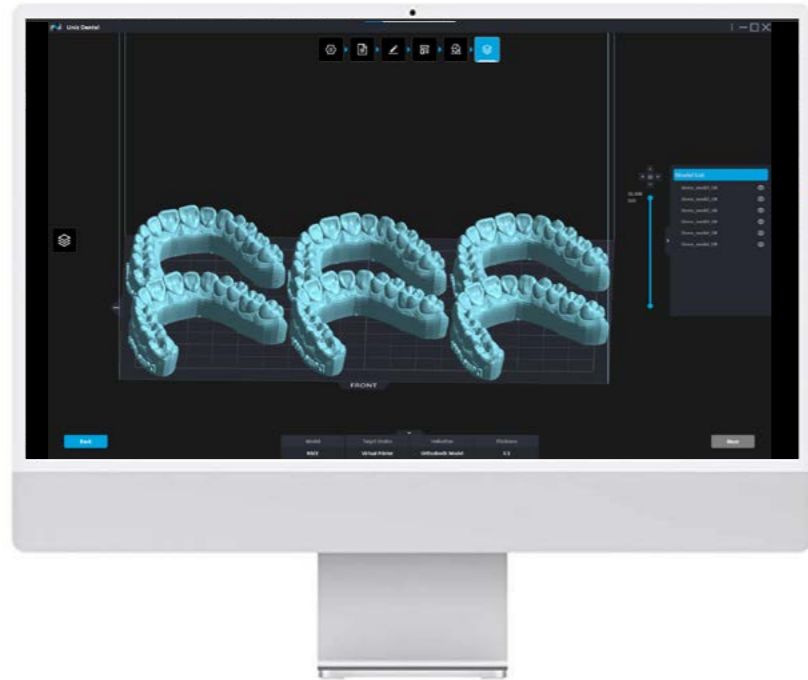


95,87 % of the data points  
in the range of 50 µm of the original data



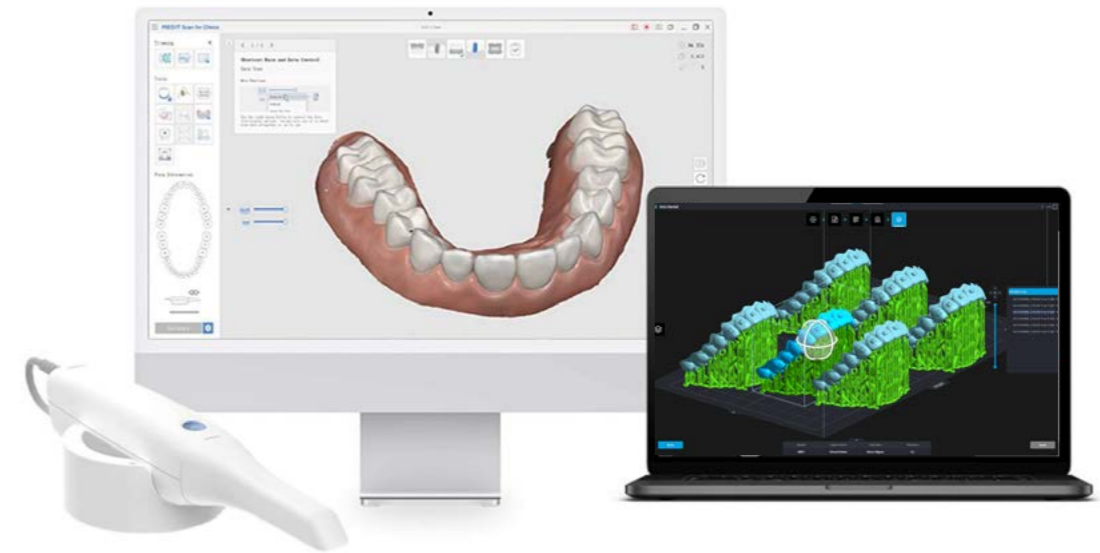
Surface with  
± 50 µm Z-resolution

# Dental Slicing Software



- Intelligent scan repair
- High-speed model slicing and storage
- Smart automatic support
- Customized editing functions

# Integration & Partnership



**Graphy**

3shape

MEDIT

exocad

Seamless integration with leading 3D scanning and digital design software providers.  
The Uniz NBEE and Uniz SLASH 2 PLUS are fully compatible with Graphy Resins.

# U Cure

## Revolutionizing 3D printing



### Ultimate LED polymerization unit

With 120,000 mJ/cm<sup>2</sup> and 90% uniformity, U-Cure sets new standards for speed and quality in 3D printing.

### Fast curing in 1 minute

Thanks to the algorithm-optimized LED arrangement, U-Cure polymerizes materials in just 1 minute – precisely and reliably.

### Precise performance from all angles

Multidirectional UV light and multi-angle reflectors guarantee top performance regardless of model placement.

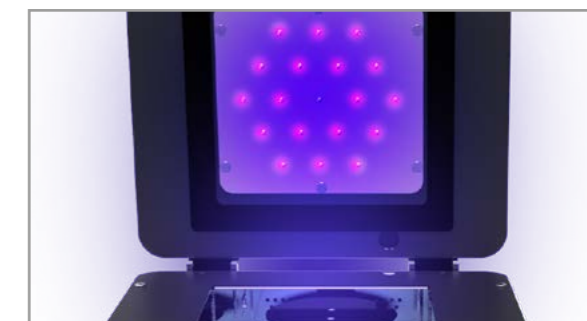
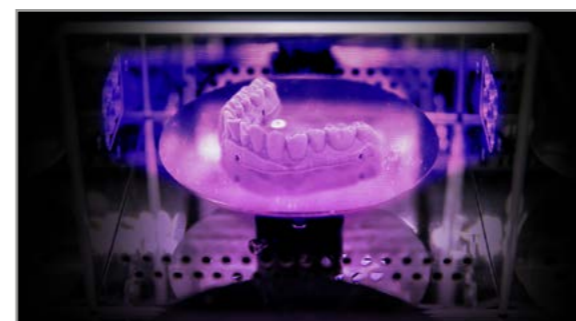
### Durable and low-maintenance

The LEDs have an operating time of up to 20,000 hours. The corrosion-resistant full metal construction ensures a long service life.

# U Cure

## Technical data

TECHNICAL DATA	
Light source	UV-LED
LED wavelength	395 nm
LED output power	75 W
UV energy density	120.000 mJ/cm <sup>2</sup>
UV irradiance	400 mW/cm <sup>2</sup>
Curing time	1 – 10 minutes
LED operating temperature	5 – 35°C
Operation interface	Touchscreen
Output voltage	DC 24 V
Input voltage	AC 100 – 240 V, 50/60 Hz
Net weight / gross weight	7 kg / 8,3 kg
Curing chamber (turntable)	Diameter: 120 mm   Height: 80 mm
Dimensions	280 x 280 x 250 mm [BxTxH]



# U Wash

Efficient cleaning of 3D prints for flawless results



## Quick cleaning in just 6 minutes (2 cycles)

Equipped with an ultrasonic generator of up to 2500 mW/cm<sup>2</sup> output and an optimized 40,000 Hz chamber resonator you achieve thorough cleaning in record time.

## Simple to use, highly efficient

Thanks to very easy model cleaning without moving parts in the chamber and intuitive operation via touchscreen with customizable modes.

## Low consumption

Different containers for different quantities and applications enable economical cleaning with less IPA. The chamber uses water instead of alcohol to transfer the standing wave. For the actual cleaning in the containers, only a small amount of isopropanol is required.

# U Wash

Technical data

TECHNICAL DATA	
Volume	2 l
Ultrasonic frequency	40,000 Hz
Ultrasonic power	60 W
Energy density	Up to 2500 mW/cm <sup>2</sup>
Cleaning time	1 – 10 minutes
Operating temperature	5 – 35°C
Cleaning chamber material	304 stainless steel
Cleaning chamber dimensions	150 x 135 x 100 mm
Operation interface	Touchscreen
Input voltage	AC 100 – 240 V, 50/60 Hz
Net / gross weight	6 kg / 7,3 kg
Dimensions	280 x 280 x 250 mm [BxTxH]
Accessories	Pliers, cleaning set, cleaning containers



# U Air

## Whisper-quiet reduction of unpleasant odors



3D printing with resin sometimes causes very unpleasant odors. With U Air, you can reduce unpleasant odors to a minimum. For a more pleasant working environment.

### Large air volume

Brushless centrifugal motors ensure effective air exchange.

### Effective filter unit

U Air directly vents the installation space of the NBEE. A combination of fleece, HEPA and activated carbon filters in the air purification cartridge removes odors and even resin particles from the air.

### Quiet operation

The integrated sound insulation ensures a pleasantly low noise level.

### Fan speed control

Steplessly adjustable air volume according to your demand.

# U Air

## Technical data

TECHNICAL DATA	
Input voltage	AC 100–240 V, 50/60 Hz
Power	60 W
Air flow	max. 11 m/s
Flow volume	max. 235 m <sup>3</sup> /h
Filtration accuracy	0.3 µm 99.5% (Laboratory data)
Weight	9 kg
Dimensions	290 x 350 x 340 mm [B x H x T]
Operating noise	40–65 dB



# zDental Model Gray V2



zDental Model Gray V2 is a high-precision material specifically developed for dental applications such as conventional dental models, removable dies, detailed orthodontic models, acrylic denture bases, etc. The material offers high accuracy, excellent processing properties and a good balance of stiffness and toughness.

zDental Model Gray V2 is necessary to exploit the unsurpassed speed potential of the NBEE\*.

\*6 aligner models in just 5 minutes



## Shaping the future of 3D printing together with UNIZ Technology

At FORESTADENT, we are thrilled to partner with UNIZ Technology – a pioneering company that is revolutionizing the world of 3D printing and photosensitive resins. Together we span a global network that we are proud of.

We share UNIZ's philosophy of not just following trends, but shaping them. As part of this exciting partnership, we benefit from the ground-breaking LCD technology developed by UNIZ – from software and hardware know-how to innovative materials.

Together with UNIZ Technology we are looking into the future and pursue the goal of reshaping the world of 3D printing.

Welcome to a promising partnership. Welcome to FORESTADENT and UNIZ Technology.



# Order overview

Order No.	Content	Description
999-4000	1	<b>Uniz NBEE 3D Printer</b> incl. resin tank, replacement LCD module, protective film for the projector, installation material and tools, 1 bottle of model resin, 220 V, 3A, 50 HZ
999-4002	1	<b>Uniz NBEE 3D Printer</b> incl. resin tank, replacement LCD module, protective film for the projector, installation material and tools, 1 bottle of model resin, 110 V, 6A, 60 HZ (USA/Japan/LatAm)
999-4001	1	<b>Uniz NBEE Replacement tank</b>
999-4119	1	<b>Uniz NBEE Replacement foil set Resintank</b>
999-4010	1	<b>Uniz SLASH 2 PLUS 3D Printer</b> incl. resin tank, protective film for the projector, mounting material and tools, 1 bottle of model resin, 100 - 240 V, 6A, 50/60 HZ
999-4011	1	<b>Uniz SLASH 2 PLUS Replacement tank</b>
999-4012	1	<b>Uniz SLASH 2 PLUS Cover for resin tank</b>

# Order overview

Order No.	Content	Description
999-4020	1	<b>U Cure</b> UV polymerization unit 100–240 V, EU cable
999-4021	1	<b>U Cure</b> UV polymerization unit 100–240 V, US cable
999-4030	1	<b>U Wash</b> Ultrasonic cleaning unit 220–240 V
999-4031	1	<b>U Wash</b> Ultrasonic cleaning unit 110 V
999-4040	1	<b>U Air</b> Air purification unit 110 / 220 V, EU cable
999-4041	1	<b>U Air</b> Air purification unit 110 / 220 V, US cable
999-4200	1	<b>Uniz zDental gray V2</b> 500 ml model resin for high-speed prints



**Manufacturer:**

**Uniz Technology LLC**  
9400 Activity Rd Ste L  
San Diego, CA 92126, US

**Distributed by:**

**FORESTADENT**

Bernhard Förster GmbH  
Westl. Karl-Friedrich-Str. 151  
75172 Pforzheim (Germany)

Phone: +49 (0) 7231 459-0  
Fax: +49 (0) 7231 459-102  
[www.forestadent.com](http://www.forestadent.com)  
[info@forestadent.com](mailto:info@forestadent.com)

  
FORESTADENT®  
GERMAN PRECISION IN ORTHODONTICS