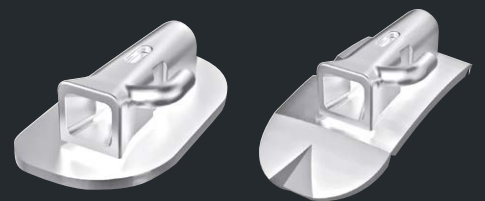




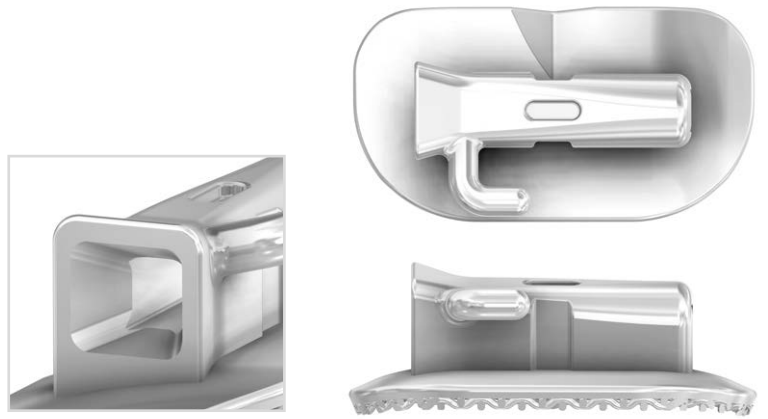
Tulip buccal tubes

Faster ligating – more patient comfort



Tulip buccal tubes

The Tulip buccal tubes owe their name to the tulip-shaped entrance funnel. It has been dimensioned especially large to allow quick and easy insertion of the archwires. Your patients will be delighted by the extremely flat design which guarantees a high level of comfort.



Maxillary	Tooth	Torque	Angulation	Distal Offset	Slot	on large Pad		on Big Foot Pad	
						right	left	right	left
76 67	0°	-	-	0°	.018" x .028"	743L0714	742L0714	743B0714	742B0714
					.022" x .028"	743L0712	742L0712	743B0712	742B0712
76 67	-10°	-	-	0°	.018" x .028"	743L0724	742L0724	743B0724	742B0724
					.022" x .028"	743L0722	742L0722	743B0722	742B0722
76 67	-10°	-	-	6°	.018" x .028"	743L0734	742L0734	743B0734	742B0734
					.022" x .028"	743L0732	742L0732	743B0732	742B0732
76 67	-14°	-	-	10°	.018" x .028"	743L0744	742L0744	743B0744	742B0744
					.022" x .028"	743L0742	742L0742	743B0742	742B0742
76 67	-14°	-	-	14°	.018" x .028"	743L0754	742L0754	743B0754	742B0754
					.022" x .028"	743L0752	742L0752	743B0752	742B0752

Mandibular	Tooth	Torque	Angulation	Distal Offset	Slot	on large Pad		on Big Foot Pad	
						right	left	right	left
7 7	-10°	-	-	0°	.018" x .028"	742T0724	743T0724	-	-
					.022" x .028"	742T0722	743T0722	-	-
76 67	-20°	-	-	0°	.018" x .028"	743L1714	742L1714	743B1714	742B1714
					.022" x .028"	743L1712	742L1712	743B1712	742B1712
76 67	-25°	-	-	6°	.018" x .028"	743L1724	742L1724	743B1724	742B1724
					.022" x .028"	743L1722	742L1722	743B1722	742B1722
76 67	-30°	-	-	6°	.018" x .028"	743L1734	742L1734	743B1734	742B1734
					.022" x .028"	743L1732	742L1732	743B1732	742B1732

FORESTADENT Bernhard Förster GmbH

Westliche Karl-Friedrich-Straße 151 · 75172 Pforzheim (Germany)

Phone: +49 (0) 7231 459-0 · Fax: +49 (0) 7231 459-102

info@forestadent.com · www.forestadent.com

FORESTADENT[®]
GERMAN PRECISION IN ORTHODONTICS